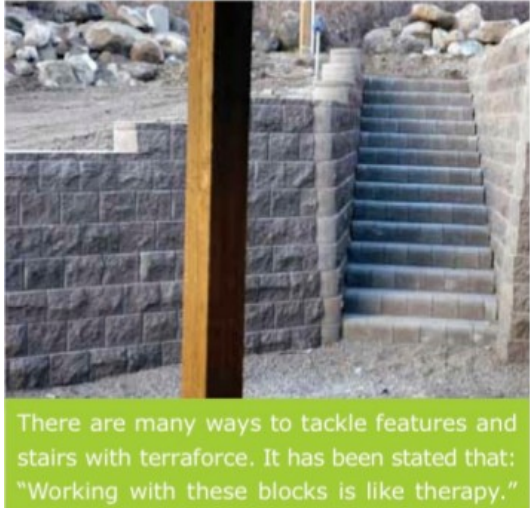


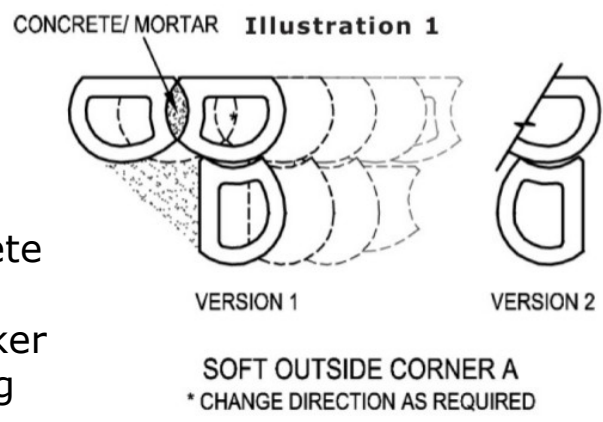
Turning a Neat Corner



The TERRAFORCE system incorporates features such as graceful radii, 90 degree corners, terraces, stairs and columns; details that are difficult and costly to construct when using conventional concrete and other retaining systems.



The TERRAFORCE RETAINING WALL system offers a modular retaining wall which, as well as offering an economical system, competes with reinforced concrete walling and other retaining systems being simpler and quicker to build as well as being pleasing to the eye.

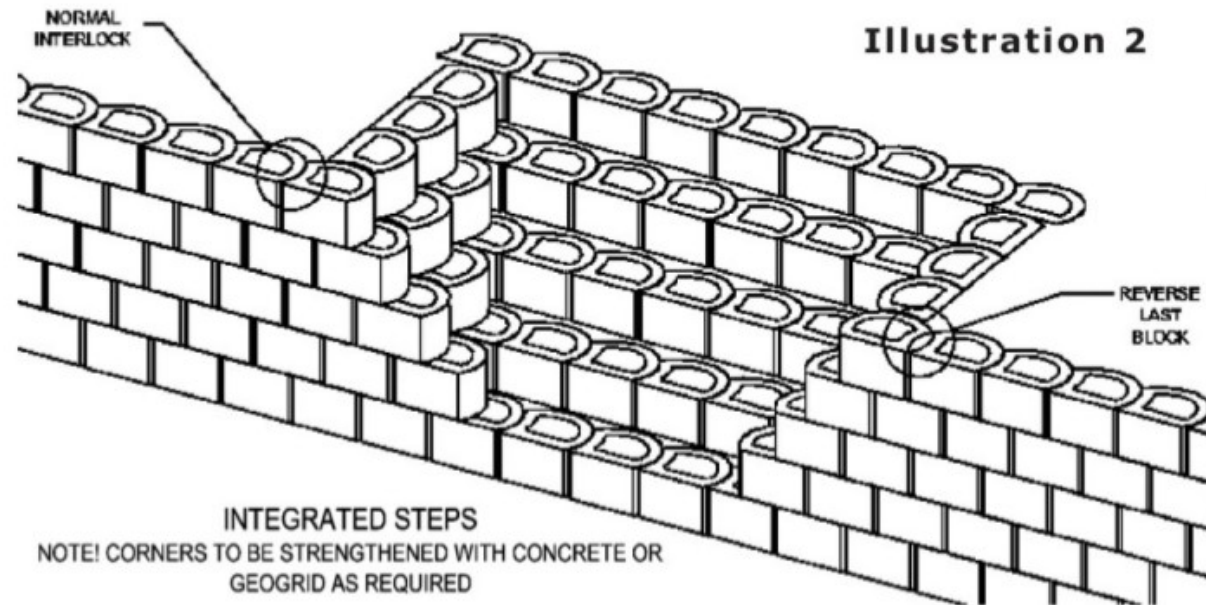


Corners are of particular interest. The TERRAFORCE system has the advantage that, whilst some systems require special corner blocks, the TERRAFORCE system provides "one block type fits all applications" which cuts down on customer stock inventory.



Turning a Neat Corner

Illustration 2



Inside 90 degree corners, with the ROCK FACE block, are created by positioning the blocks to alternately lock in "zipper fashion" (illustration 4). When the ROCK FACE block has been specified as a 90 degree outside corner it is necessary to cut and trim the selected block with angle grinder thus achieving a neat finish. These corner blocks are filled with concrete or mortar for added strength.

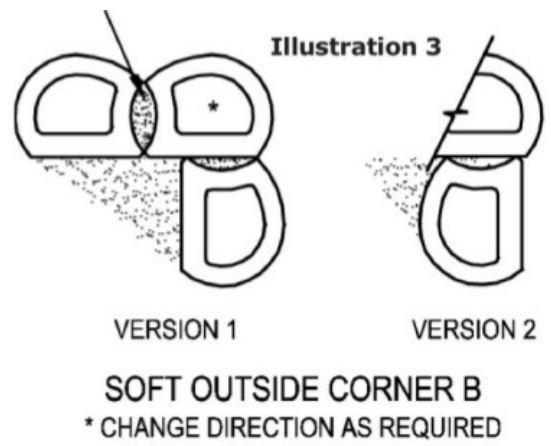
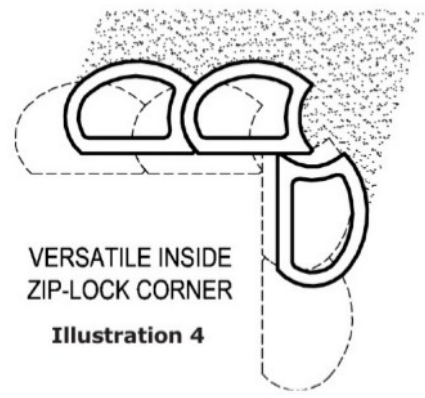
Generally, rounded outward facing curves that function as wider corners can be easily achieved by adjusting the horizontal interlock of each adjacent TERRAFORCE block. Sharper outside corners are also possible by positioning the blocks with the round face functioning as a soft corner (illustrations 1,2 & 3).



Turning a Neat Corner

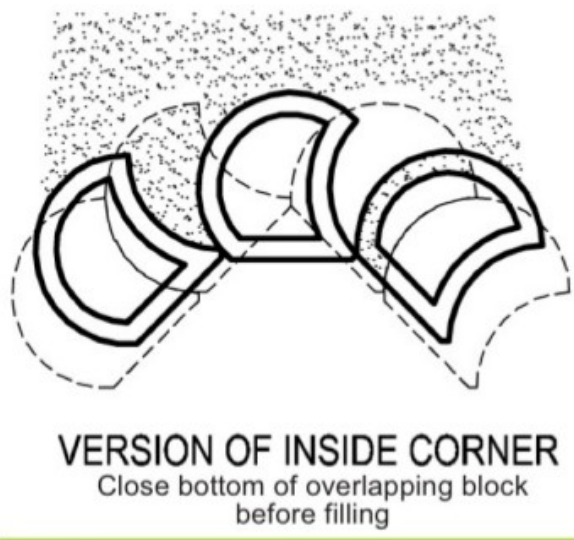
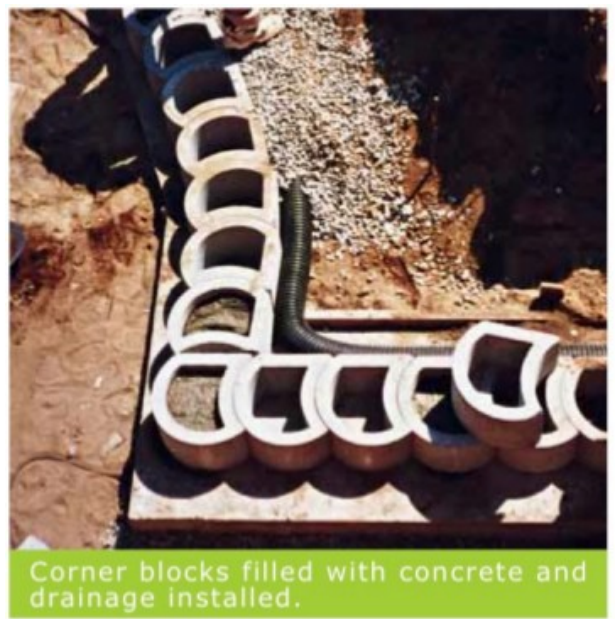
Consideration has to be given to stabilising corners and sharp curves, especially when the wall extends above 1.5m high. This is easily achieved by either using geogrid matting, which is overlapped into the backfill, using 3-5% cement stabilised backfill or filling the corner blocks with vertical reinforced concrete.

The TERRAFORCE corner system offers an inexpensive and attractive method of corner construction.

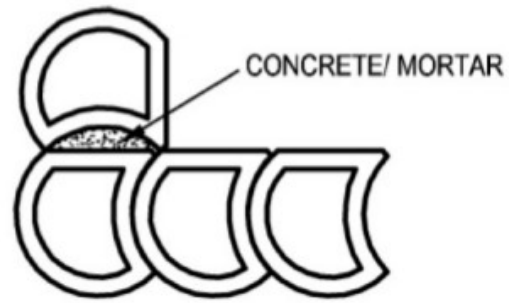




Turning a Neat Corner



Inside corner and steps



VERSION OF OUTSIDE/ INSIDE CORNER

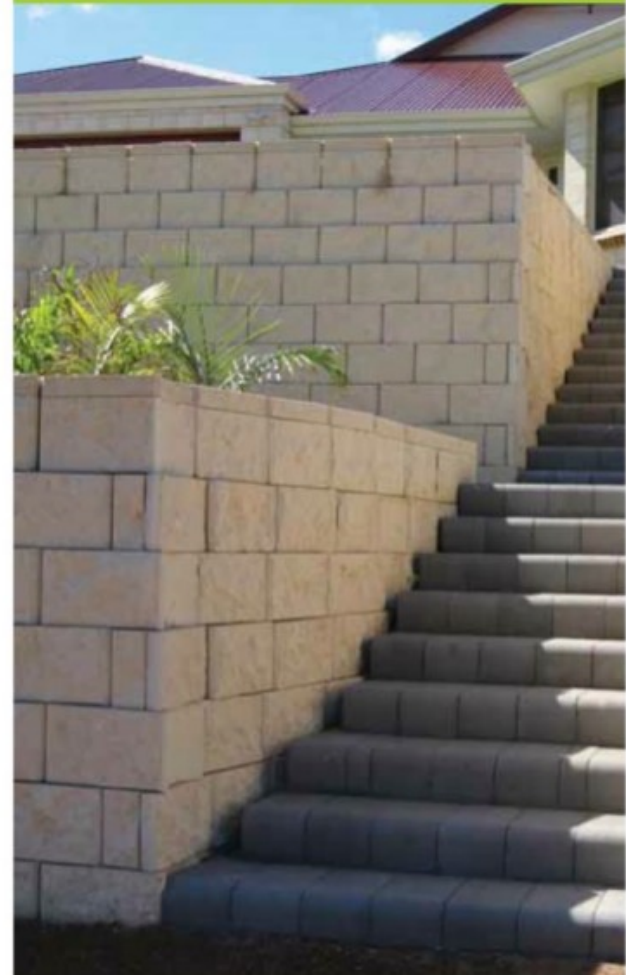


Turning a Neat Corner

Architectural features are easily achieved with concrete filled blocks.



Neatly cut corners, stabilised with cement/sand backfill.



Precision cutting of blocks to shape





Turning a Neat Corner

